

ROHS COMPLIANT

2.54mm Pin Header Dual Row Angle Type

SPECIFICATION

Current Rating: 3 Amp  
 Insulation Resistance: 5000M ohms min  
 Contact Resistance: 20M ohms max  
 Dielectric Withstanding: AC500V  
 Operating Temperature: -65°C to +125°C  
 Contact Material: Brass  
 Insulator Material: PBT,UL 94V-0 Black

Ordering Code:

PHER04 - X - X - D - X - X - X - X  
 ① ② ③ ④ ⑤ ⑥ ⑦ ⑧

① Series No:

⑥ Insulator Material

② No. of Contacts  
02 To 80

A: PBT  
B: PA6T  
C: LCP

③ Contact Plating  
G0: Gold flash  
G1: 3u" Gold  
G2: 5u" Gold  
G3: 10u" Gold  
G4: 15u" Gold  
G5: 30u" Gold  
SN: Tin

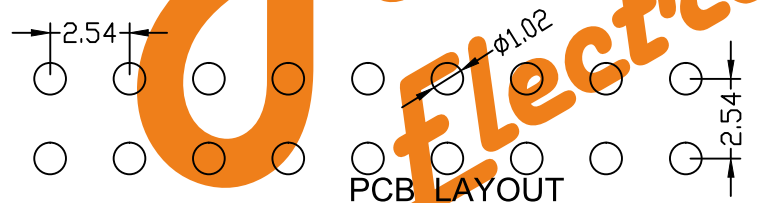
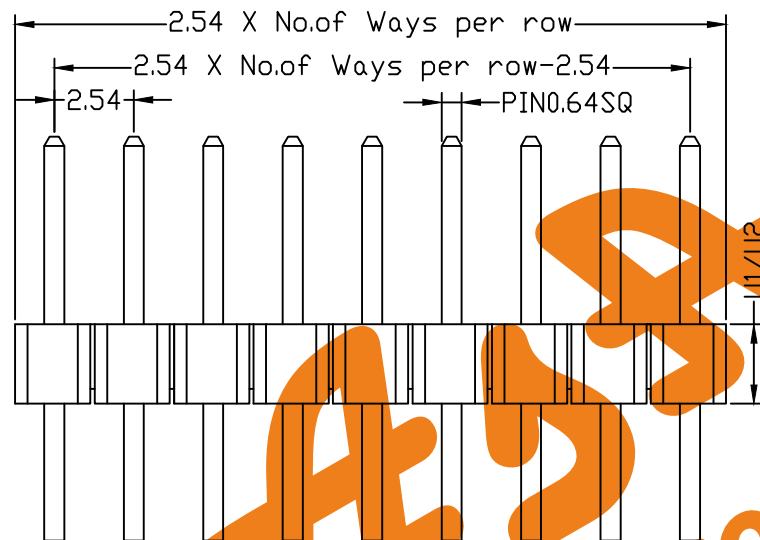
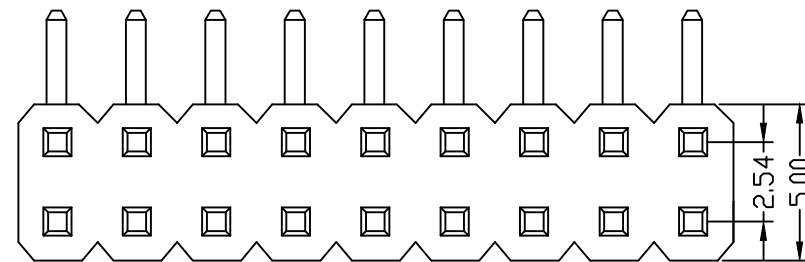
⑦ Packing  
A: Tray  
B: Bag  
T: Tube

④ Connector Type  
D: Dual

⑧ Plastic High  
H1: 2.00mm  
H2: 2.54mm

⑤ Pin Length:  
A+B+D+H1/H2+1.25

Please mark the desired length in the A/B/D/H



PCB LAYOUT

WWW.ASA-ELEC.COM

ASA Electronic

Unless Otherwise specified tolerance

X: ±0.35  
X.X: ±0.25  
X.XX: ±0.20  
X.XXX: ±0.15

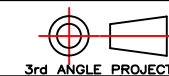
A	B	D
6.0	3.0	1.2

Optional

SCALE: As Shown  
UNIT: mm

DRAWN: junfon H

CHECKED: YANG



3rd ANGLE PROJECTION



WWW.ASA-ELEC.COM

ASA Electronic Co.

Tel : (+98) 21 66 73 56 82 Mob : (+98) 912 03 161 02

TITLE:  
2.54mm Pin Header Dual Row Angle Type

DRAWING NO: PHER04-XXDXXXX

PRODUCT NO: PHER04-XXDXXXX

Add option of plating

DATE

DESCRIPTION

REV